

Chancellor Court, Regents Park Road, N3
Approximate Gross Internal Floor Area = 138.25 sq m / 1488 sq ft

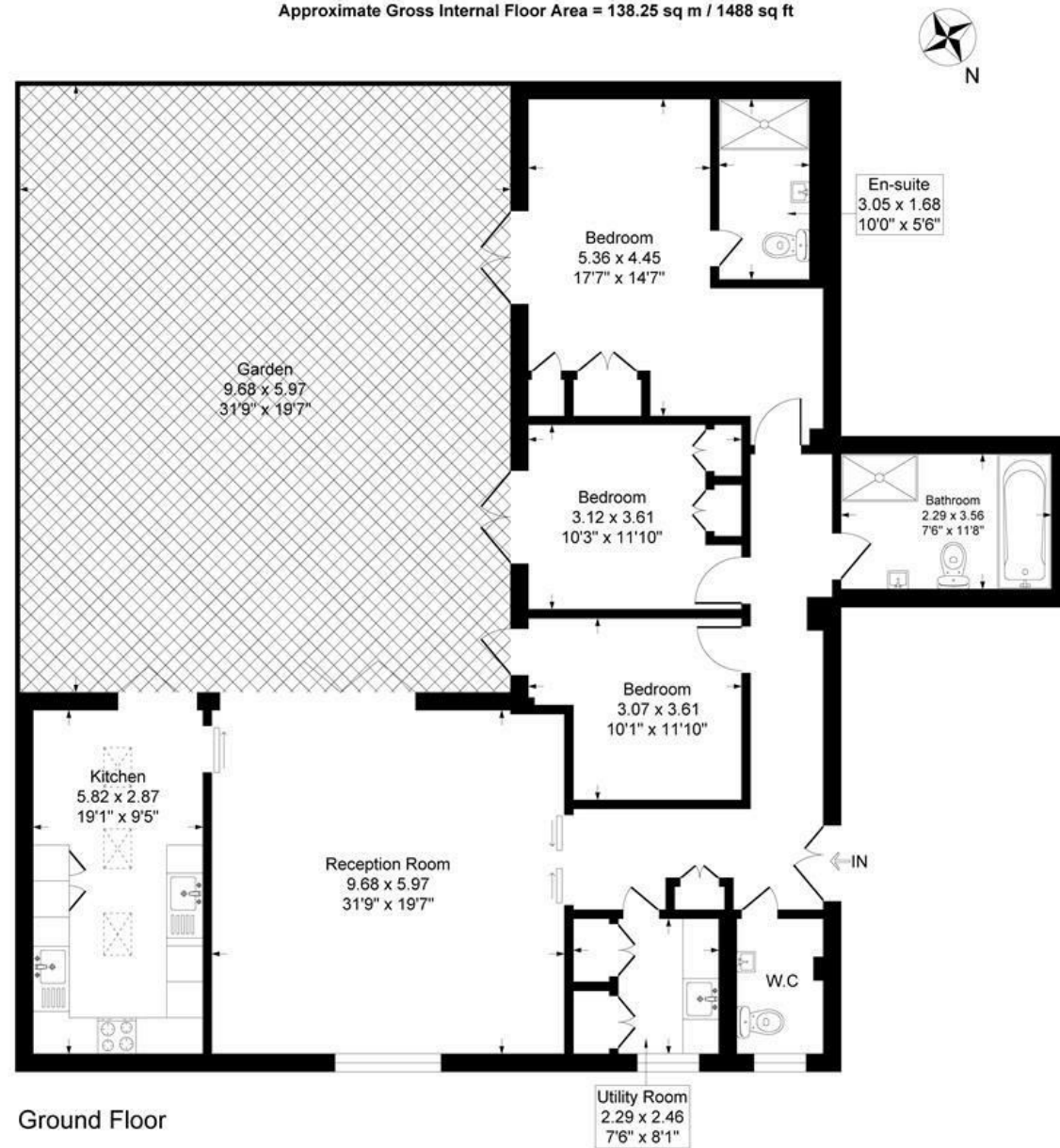


Illustration for identification purposes only, measurements are approximate, not to scale.



Regents Park Road, N3

This fantastic three-bedroom ground floor apartment is located in Finchley, N3. The apartment offers modern living throughout, featuring a spacious and well-presented interior. There are three generous bedrooms, including a principal bedroom with en-suite bathroom, plus a second family bathroom.

The apartment benefits from a private garden, ideal for outdoor dining and relaxation. Additional features include a separate utility room, underground parking for one car, and excellent storage. Set within a well-maintained development, this superb apartment is conveniently located for local amenities and transport links.

Available now
Long Let

£900 Per Week

